



Universe Is Infinite And Exploration Never End



Global First Origination

Double sided textile
one-shape printing technology

Double sided textile printer series



USA & CANADA
USA @ SkyJetPrint.net / Canada @ SkyJetPrint.net
+1 (800) 824-8984 / (828) 423-1533
5024 B. U. Bowan Drive, #300
BUFORD, GA 30518 USA

EUROPE
Europe @ SkyJetPrint.net
U.K. +44 (0)1224 017967
FRANCE +33 (0)7 57 93 34 04
Carrwood Park, Selby Road
LEEDS, LS 15 4LG United Kingdom



Leader of Global
Double Side Printing Machines

ADVANTAGE OF MARKET

Advantage of market- Irreplaceable pacemaker.

SDouble one-shape double-sided digital printing equipment has reached strategic cooperation with a number of large enterprises in Como, Italy, and has provided double-sided printing solutions for international fashion brands for many years.



SDS1900 | SKYJET Double sided textile printer |

[One time forming+Double sided jacquard printing+New upgraded jacquard printing>>>](#)

Double sided textile one-shape printing technology



SKY AIR-SHIP DIGITAL PRINTING EQUIPMENT CO.,LTD

Established in 2001, Shenyang Air-Ship digital printing equipment company is the global leader of double-sided synchronous printing technology and one of the earliest large-scale digital printing equipment manufacturers in China. As the unit of the China-India Association branch, and in possession of ISO9001 quality system certification and CE certification, the company participated in the work of drafting the "National Standards for Wide-format Printers" and the formulation of the "National Occupational Standards for Printer Assembly and Maintenance ", and is the first who achieved "Maintenance Work Station approval" and the first-prize winner of China's "Textile Light" and national high-tech enterprises and other honors.

Sky air-ship established a differentiated product strategy, with the world's leading synchronous double-sided printing technology as its core competitiveness, helping customers to move to a new level in the field of high-end product production, and is committed to providing digital printing equipment, processes, consumables and An integrated solution for operation, the products include: textile double-sided digital printing machine series, textile double-sided direct inkjet machine series, single-sided and double-sided UV inkjet printer series.



First global innovation leading whole world

22 years of insisting on research and development of synchronous double-sided printing technology, enjoying a high reputation in the global digital printing field.

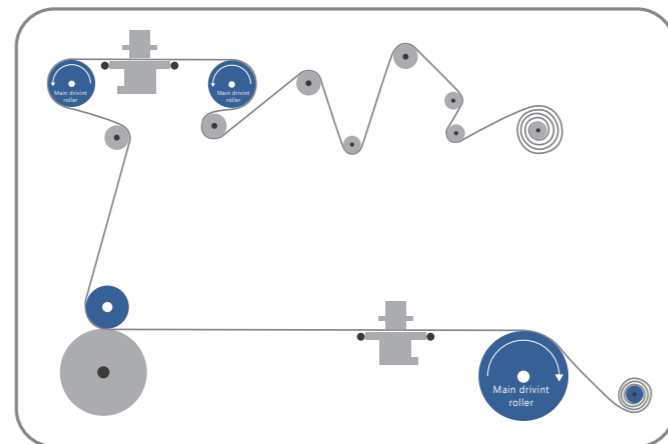
"SKYJET" double sided printing technology development experience make it got the double sided printing technology patent in China,Japan,USA,EU etc.



SDouble double sided digital printer

Interpretation of working principle

It adopts the synchronous double sided patent printing frame of 2 sets of printing carriages to complete double sided printing by one time fabric feeding. "Fabric constant tension control", "Auto-matic image identification" and "Auto-matic tracking alignment" can keep fabric front&back accurate auto-matic printing alignment without manual work which meet large-scale double sided production need.



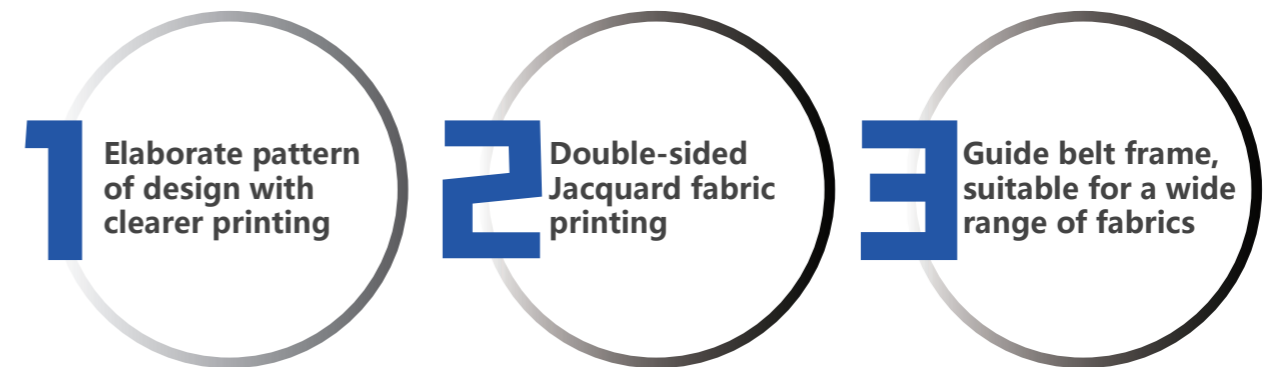
Obvious color defect of single sided printer

- 01 Obviously color difference between front and back of media
- 02 Big color pattern is not homogeneity
- 03 Textile has stripe spots, spot



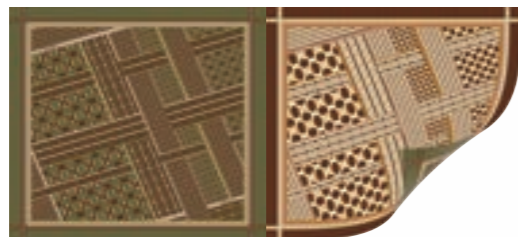
Double sided textile one shape printing technology combines traditional and digital technology together in One.

SDouble textile printer combines traditional with digital textile printing crafts to create World Unique Double Sided One Shape Printing Technology. The technology can print textile double sides at one time.

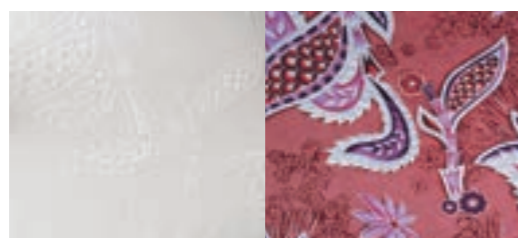


Create more business opportunity

Six premier solving solutions



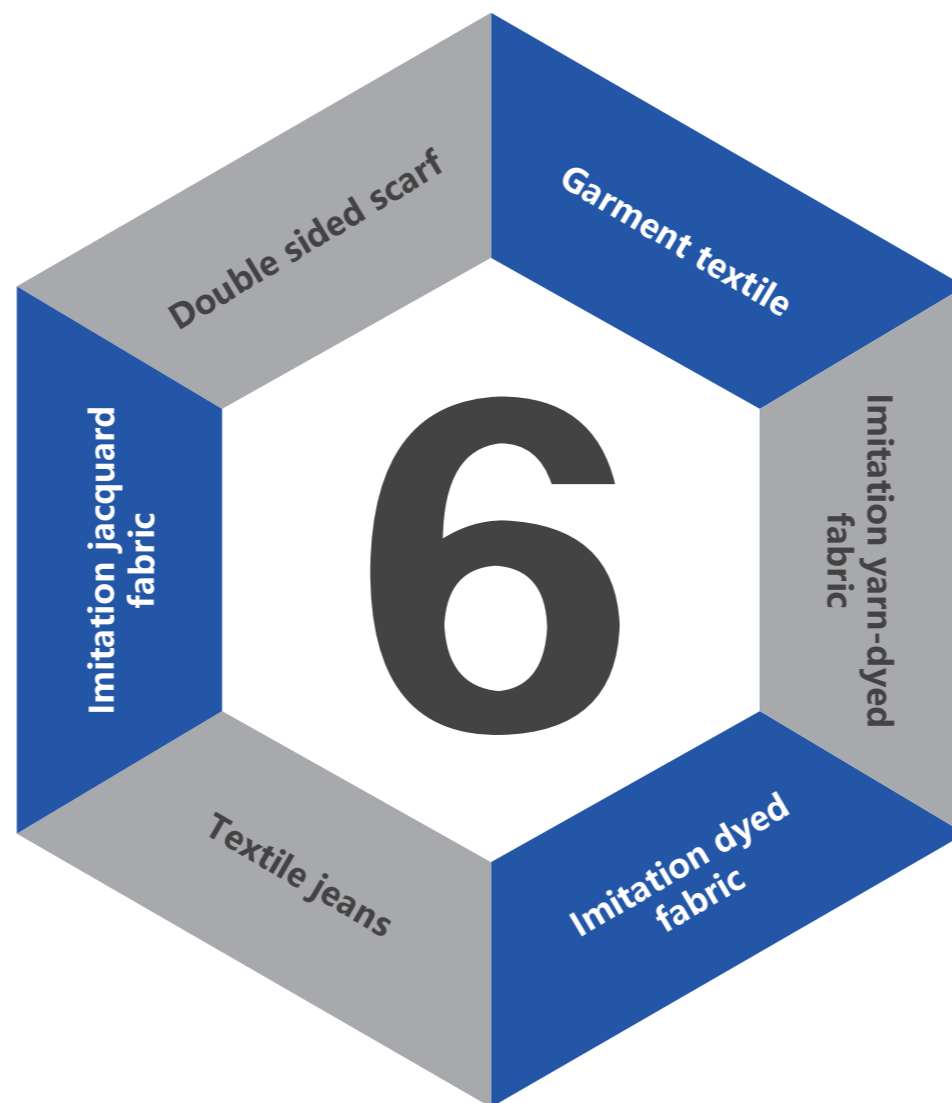
The scarf clothing has the characteristics of double-sided display. The "same flower and different colors" double-sided printing process can achieve the printing effect of the front and back sides of the color contrast which two colorful scarves are combined into one, it is best art solutions for different clothes and different occasions.



Jacquard fabrics exposed for high-grade and tasteful, but the richer the color, the higher the production cost. The "jacquard printing" double-sided printing process can simulate multi-color jacquard effects on white jacquard fabrics, reducing the production cost of jacquard fabrics.



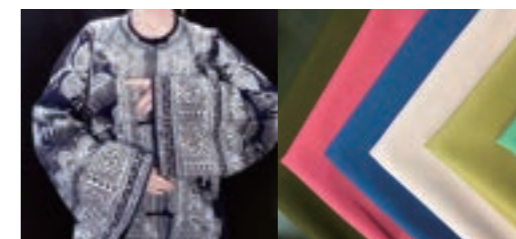
Jeans is one of yarn dyed fabric. It uses special washes and distressing methods to make old affection, but sewage discharge has been restricted since environment protection. Double side technology makes the front wash or printing effect, and yarn dyed effect on the back, this can make jeans more fashion and high level.



Silk scarf is easy to reveal the other side and if back side silk color is lint, then it looks bad. "same pattern with same color" art is solving the problem. Using "different pattern with different color" art to make a hard copy textile for brand owner by different design of front and back side art.



Yarn-dyed fabrics have a strong three-dimensional effect and high color fastness, but the cost of small-batch customization is relatively high. Using the "same flower and same color" double-sided printing process, the imitation yarn-dyed pattern can be printed on the front and back of the white fabric at the same time, which can simulate the digital printing fabric with the yarn-dyed effect.



Small-batch dyeing is a requirement for clothing customization and individual development. The double-sided printing process of "spraying instead of dyeing" can achieve the printing effect of spot color dyeing, and can also replace manual batik printing, saving 50% of sewage discharge compared with traditional dyeing.



SKYJET

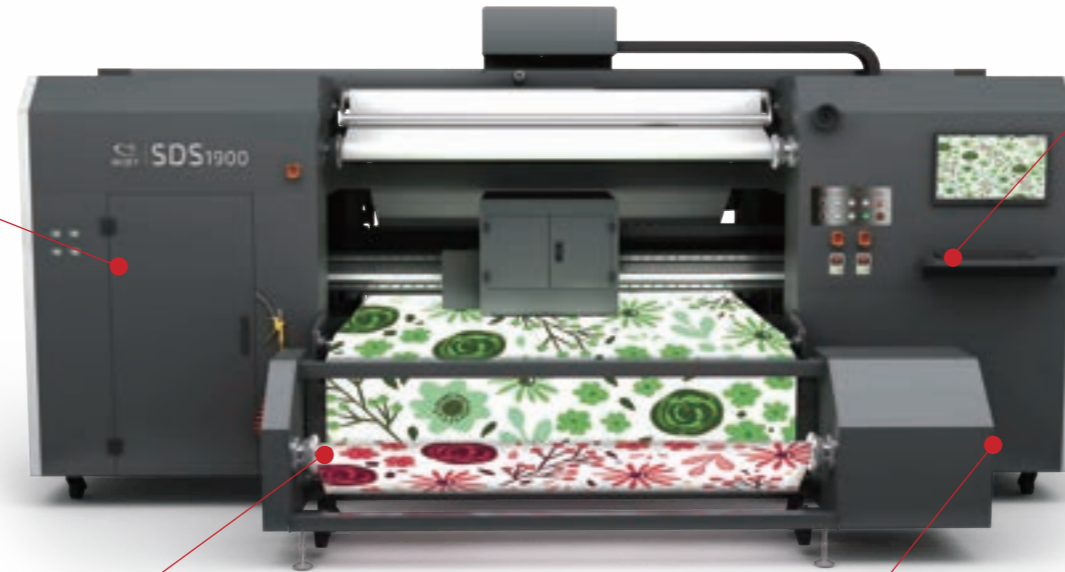
SDS1900

Double sided textile printer

TECHNICAL PARAMETERS

CE mode name	SDS1900
PH Type	KJ4B-QA06
Color	8 colors (C, M, Y, K, LM, LK, BLUE, ORANGE)
PH No.	8 colors 16pcs (double carriage)
Speed Weak mask	3pass(605×1800) 52m ² / h
	4pass(605×2400) 39m ² / h
	6pass(605×3600) 26m ² / h
Media Thickness	1800mm
Ink Type	Active ink, Disperse ink, Acid ink, Pigment ink
RIP Software	Neostampa
Work Environment	Temp20-28°C, Humidity50-70%
Power	380V, 50/60Hz, Printer 16KW, Heating fan8.5KW
Dimension	Printer: 5890mm×4970mm×2170mm
	Take up: 2975mm×1175mm×870 mm
Net weight	3600kg

 **BELT CONSTRUCTION WITH HIGH PRECISION**



 **MORE MATERIAL APPLICATION**

 **NEW TECHNOLOGY UPGRADED JACQUARD PRINTING**

 **INTELLIGENT RECOGNITION AND PRECISE ALIGNMENT**

Technical index

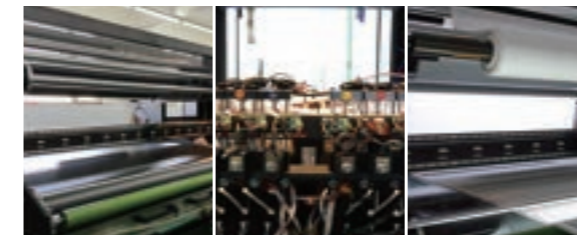
Quality hardware configuration

- KYOCERA KJ4B-600DP Industry print heads
- Linear motor guild rail
- S shape fabric rolling +belt print frame



Fully print monitoring system

- Tension control
- Negative pressure protection
- Rule and light box for efficient production



Anti-fouling system

- Anti-pollution protection function
- Belt washing system
- Heating system
- Teflon roll anti-pollution



Intelligent system

- Automatic image identification
- Automatic DS alignment
- Wrinkle detection
- Print Log and ink consumption statistics



Stable controlling system

- Industry PLC central control module
- Heating system
- Whole sealing moisturizing system, purging system and print head wiping system

CE safety system

- Light curtain
- Safety door
- Safety rope



SKYJET

TD1800

Double sided textile printer

 **DOUBLE SIDED PRINTING
ONE TIME MOLDING**

 **AUTOMATIC CONFIGURATION
AND PRECISE ALIGNMENT**

 **SUITABLE FOR WIDE
A RANGE OF MATERIAL**

 **THREE MAJOR CRAFTS**

The same pattern and the same color
The same pattern and same color on the front and back of the silk. the color is uniformly printed with no color difference.


The same pattern and different colors
Have the same pattern and different colors on the front and back, reflecting a unique fashionable style.


Different patterns and colors
Different patterns and colors on the front and back of silk are appealing to the customer who have reversible wearing demand.


 **TECHNICAL PARAMETERS**


CE mode name	TD1800	
PH type	KJ4B OR G6	
Color	8 colors (C、M、Y、K、LM、LK、BLUE、ORANGE)	
PH No.	8 colors 16pcs (double carriage)	8 colors 8pcs (double carriage)
Speed Weak mask	G6	KJ4B-0300
	3pass(605×1800) 63m ² / h	3pass(605×1800) 56m ² / h
	4pass(605×2400) 51m ² / h	4pass(605×2400) 45m ² / h
	6pass(605×3600) 37m ² / h	6pass(605×3600) 33m ² / h
Printing Width	1800mm	
Ink type	Active ink、Disperse ink、Acid ink、Pigment ink	
RIP software	Neostampa	
Work environment	Temperature20-28℃, Humidity 50-70%	
Power	380V, 50/60Hz, Printer16KW, Heating fan8.5KW	
Dimension	4820mm×1830mm×1965mm	
Net weight	2220kg	


Technical index


 **Print head configuration:**
RICOH G6 or KYOCERA KJ4B-300DPI Industrial print heads.


 **Printing structure:**
Grooved printing structure, suitable for woven fabrics with stable tension.


 **Intelligent identification:**
a set of scanning device can identify the alignment printing pattern and generate alignment parameters.


 **Automatic alignment:**
Constantly collecting textile images, automatic modify alignment errors.


 **Print note:**
Automatic note all print job.

 **Ink supply:**
Negative pressure ink supply system ,wriggle pump can reduce the bubble,abnormal ink supply protection system.

 **Control system:**
Improve stability of operation of system.

 **Print head maintain:**
Whole sealing Moisturized, ink purging, head shave device to keep print head stable.

 **Ink cost statistics:**
Automatic calculate ink use level and the print cost.

 **Control system:**
Improve stability of operation of system.